

Alexandria Minerals Corporation is a Canadian junior gold exploration company **focused on building gold deposits in the heart of two of the world's greatest mining districts** at Val d'Or, Québec, Red Lake, Ontario and Flin-Flon and Snow Lake, Manitoba.

### INVESTMENT HIGHLIGHTS

- Focus on expanding Orenada Zone 4 by continuous drilling
- Cash and Current Assets \$7.0 million  
\$2.5 million financing completed with Sprott Capital Markets in April 2017
- Aggressive Exploration Program on Val d'Or Property
  - 9,100 meter drill program recently completed
  - 30,000 meter summer drill program currently underway with three rigs
- Recent Drill Results Focused

### HIGHLIGHTS

#### Fast-track Drilling Increasing Shareholder Value

Alexandria drilling with three rigs, expediting process of discovery

#### Alexandria Advanced Gold Exploration Company in the Heart of the World's Greatest Mining Districts

2.3 million ounces Global Resource and Growing

#### Aggressive Exploration Program to Significantly Grow Gold Assets

Discovered Québec's Next Gold Mine Sold West Zone Au-Cu deposit to Agnico Eagle in 2014 for \$5 million plus 2% NSR; Agnico files environmental application.

#### Share Ownership

Management/Insiders own 6%;  
**Sprott**, 8.5%; **Agnico Eagle**, 7%;  
**Teck** 2%; **IAMGOLD**, 2%; **Gabelli**, 2%;  
**Gold 2000**, **US Global**, **AIS**, **Dundee**;  
Other funds and Accredited Investors 30%

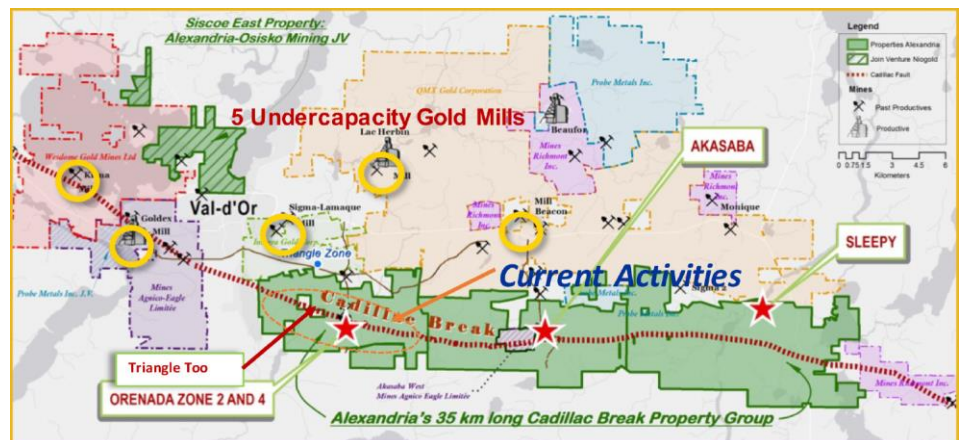
#### Lowest Costs of Discovery

With 170,000 m of drilling since 2007, all-up cash costs of \$18/ounce gold resource discovered, including 69 cents per oz of gold discovered at the West Zone.

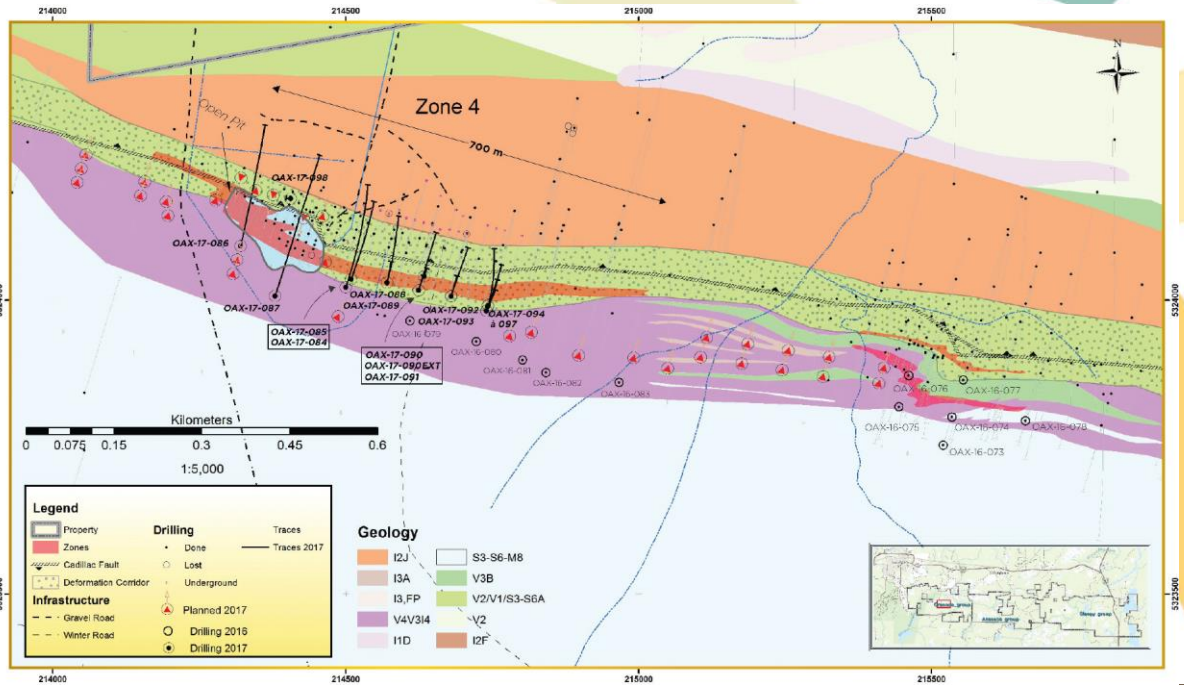
#### 1. Orenada Zone 4

- Intersection and verification of multiple, high-grade, stacked vein sets at Orenada
- Recent Assays:
  - 9.00 g/t gold over 13.89 meters, including 16.23 g/t gold over 5.05 meters; 6.29 g/t gold over 15.35 m
  - 3.82 g/t gold over 63.70 meters, including 6.29 g/t gold over 14.35 meters
  - 4.85 g/t gold over 12.00 m, including 9.15 g/t gold over 3 m
- Confirms occurrence of high-grade veins 100 m West and 100 m below limits of previously-estimated Current Resources (2009); open in all directions
- 35 Holes have been completed; results pending for 17 holes

### CADILLAC BREAK PROPERTIES, VAL D'OR



## ORENADA ZONE 4 AND ZONE 2



### CORPORATE STRUCTURE

Shares Outstanding	474,502,856
Fully Diluted	580,677,719
Cash & Sec	\$7.0 M
52-week high/low	\$0.05-\$0.012
Market Cap	\$40 M

**POSITIONED  
FOR GROWTH**  
Strategic Land Packages  
in well-known  
Mining Districts

Global resources of 2.3 million total ounces of gold and gold equivalent

In Val d'Or, AZX has 640,000 oz gold (Measured-Indicated), and 770,000 oz gold (Inferred) on its Cadillac Break property package

In Northern Manitoba (Snow Lake and Flin Flon) have 800,000 oz (Measured-Indicated) and 200,000 oz (Inferred) gold and gold equivalent

### RECENT NON-CORE PROPERTY DEVELOPMENTS 2016

#### Probe Metals

Optioned the eastern 1/3 of our Cadillac Break Property Group to the discoverers of the multimillion ounce Borden Gold deposit near Timmins Ontario.

\$5 million over 4 years,  
\$2 million in 2 additional years  
+ 500,000 shares

#### Prosper Gold Corp

Optioned our Matachewan, Ontario, properties to the discoverers of the multimillion ounce Blackwater gold deposit in British Columbia.

\$5 million over 5 years  
+ 750,000 shares

#### Quinto Real Capital Corp

Optioned our Chibougamau area properties to experienced junior explorer.

\$5 million over 5 years  
+ 1.5 million shares

### MANAGEMENT & BOARD

#### Management Team

**Eric Owens**  
President/CEO, Interim VP  
Exploration, PGeo, PhD, Co-Founder  
30 years' experience in North America, Mexico and Central America with Newmont Mining, BHP Minerals, Phelps Dodge, and Echo Bay; Discovered El Zapote Silver Deposit, El Salvador and American Girl Gold Mine, California

**Mary Vorvis**  
Vice President, Corporate  
Development and Investor Relations  
Over 20 years in global and venture capital markets serving natural resources and technology industries, with 10+ years in mining exploration finance; Has built and maintained key strategic relationships with financial institutions, fund managers, brokerages.

**Philippe Berthelot**  
Vice President Exploration  
More than 28 years' experience in exploration, with focus in Quebec; Participated in discovery of Langlois Mine and building Desjardin Discovery Deposit, Lac Pelletier Gold deposit, and Jolin Gold deposit.

**Mario A. Miranda CFO, CA**  
15+ years mining governance; Previously with Kinross, Lakeshore Gold and White Pine Resources.

#### Board of Directors

**Eric Owens**  
President & CEO

**Peter Gundy**  
Chairman

**Robert Geis**

**Walter Henry**

**Gary O'Conner**

**Priya Patil**

#### Head Office

1 Toronto St., Suite 201,  
Box 10, Toronto, Ontario,  
Canada M5C 2V6

Tel: 416.363.9372  
Fax: 416.363.6872  
www.azx.ca

**Mary Vorvis**  
Tel: 416-305-4999

#### Val d'Or Office

1952 3rd Ave  
Val d'Or, Québec  
Canada J9P 7B2

Tel: 819.874.1333  
Fax: 819.824.2094